

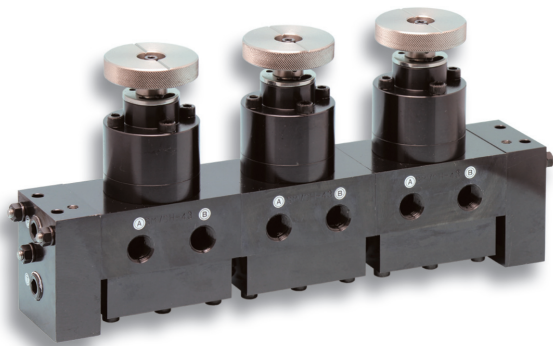
Multiple-linkage type Manual change valve

RIKEN

SMVCH-43 Series

(Production on order)

Photo

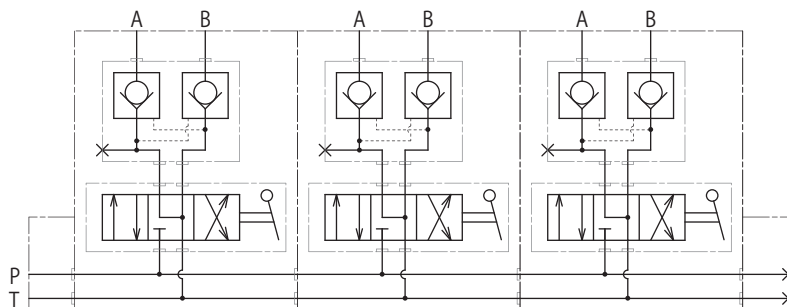


Features

- This "Multiple-linkage type" manual change valve allows for individual operation of number of cylinders
- Extremely less internal leakage with the rotary type change valve
- Linking this valve provides compact unit. 6 linkage type, 12 linkage type and others are available.
- The type which all ports are blocked at the neutral mode of the valve is available. Connection to a pilot operation with non-check valve type is available.

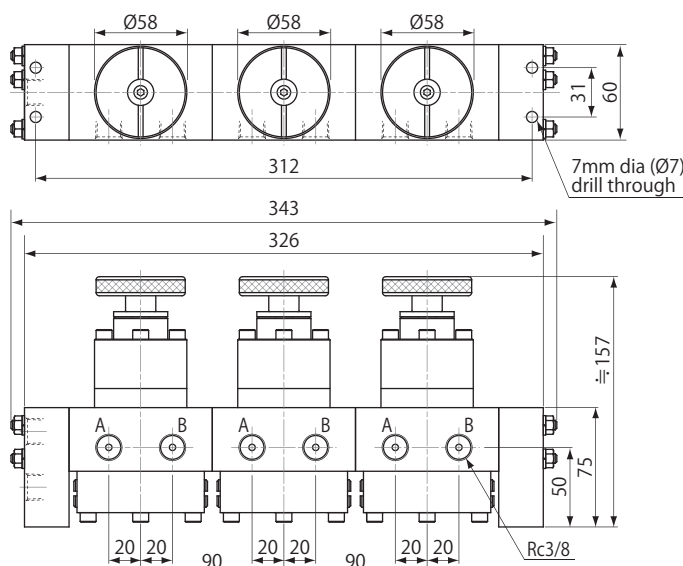
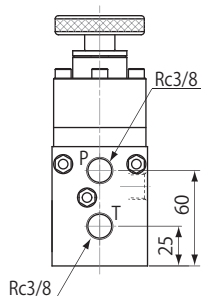
Hydraulic circuit design (Tripartite type)

[Type : SMVCH-43P-3]



Specification

| | |
|--|---------|
| Maximum operating pressure | 70MPa |
| Maximum flow | 3L/min |
| T port allowable back pressure | 1.5MPa |
| Approx. gross weight (Tripartite type) | 15.3kgs |



※All ports are opened during switching transition period.

※These specifications are subject to change without notice.

RIKEN KIKI CO., LTD.

URL : <http://www.rikenkiki.co.jp>

E-mail : osd@rikenkiki.co.jp

Head Office: 4-24-50 Takanawa, Minato-ku, Tokyo 108-0074 JAPAN
TEL: +81-3-3447-1151 FAX: +81-3-5488-7022

Osaka Office: 10-21 Hiroshiba-cho, Suita City, Osaka 564-0052 JAPAN
TEL: +81-6-6384-2766 FAX: +81-6-6368-2333

Fukuoka Sales Office: Tamaishinwa Bldg., 3-12-3 Hakata-Ekimae, Hakata-ku, Fukuoka City 812-0011 JAPAN
TEL: +81-92-411-4440 FAX: +81-92-415-1011