

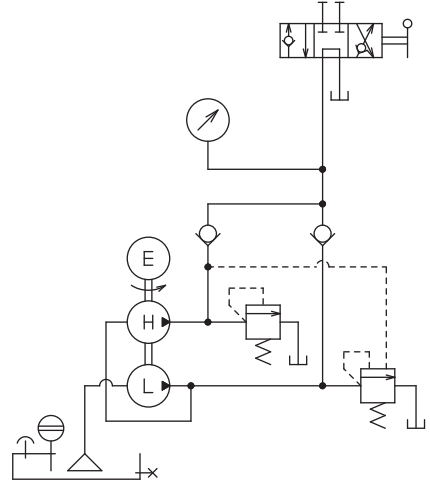
# Engine Pump

## EPH-10 series

### Features

- Driving source is the gasoline engine, which works with no power supply in the field instead of an electric pump or manual pump.
- Two-stage discharge pump is equipped for highly effective work.
- Equipped 4 stroke engine, economical fuel efficiency with minimum toxic substance and smoke.
- 25% lighter than conventional engine pump
- Equipped the useful roll bar standard.

### Hydraulic circuit designation



### Specification

**Gasoline tank**

- Tank oil level : 1.6L
- Driving source : Gasoline
- Approximate capable time of operation : 3 hours

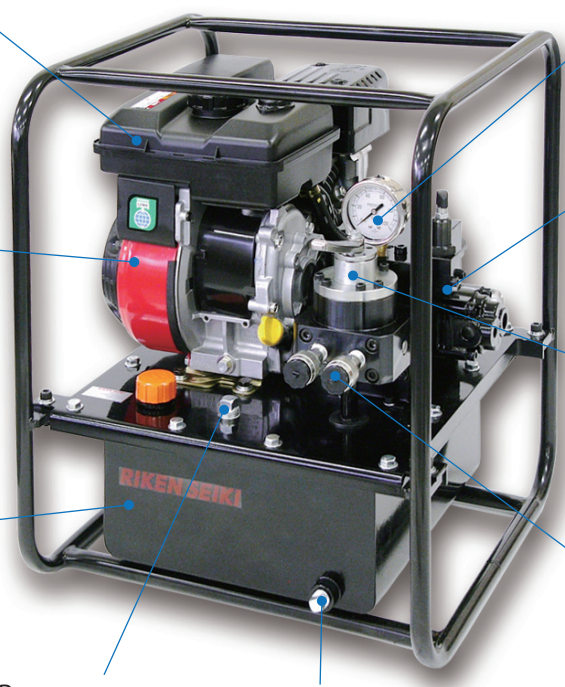
※ Standard operation time with no load.

**Engine**

- Air-cooling 4 stroke single-cylinder engine tilt type
- Rating output : 1.6kW
- Maximum output : 2.2kW

**Oil tank**

Tank oil level 11.4L  
Effective oil level 8.4L



**Pressure gauge**

φ60 x 100MPa Glycerin contained

**Pump**

High pressure pump  
Max. operating pressure 70MPa  
Discharge volume 0.9L/min.

Low pressure pump  
Max. operating pressure 8MPa  
Discharge volume 6.5L/min.

※ Discharge volume at 1600rpm

**Directional control valve**

Equipped the pressure hold function which works at switch transitional period and neutral position

**Discharge port**

Port size Rc3/8

※ S-1R Couplers are equipped on this photograph.

**Return port**

Port size Rc1/2

**Drain oil port**

Port size Rc3/8

Approx. Gross Weight : 60kg

※ These specifications are subject to change without notice.

**RIKEN KIKI CO., LTD.** URL : <http://www.rikenkiki.co.jp> E-mail : [osd@rikenkiki.co.jp](mailto:osd@rikenkiki.co.jp)

**Head Office:** 4-24-50 Takanawa, Minato-ku, Tokyo 108-0074 JAPAN  
TEL: +81-3-3447-1151 FAX: +81-3-5488-7022

**Osaka Office:** 10-21 Hiroshiba-cho, Suita City, Osaka 564-0052 JAPAN  
TEL: +81-6-6384-2766 FAX: +81-6-6368-2333

**Fukuoka Sales Office:** Tamaishinwa Bldg., 3-12-3 Hakata-Ekimae, Hakata-ku, Fukuoka City 812-0011 JAPAN  
TEL: +81-92-411-4440 FAX: +81-92-415-1011